

# OREAD MOUNTAINEERING CLUB MAGAZINE

**JULY – AUGUST 2023**



**Sunset over Harpur Hill – now what is that strange bright dot in the foreground? See page 15 for more of this mystery. Photo Jan Wilson.**

## **Editorial**

In here is the list of Wednesday evening outdoor climbing venues for July and August as this is a double issue. Coming up are both climbing and walking days in the Peak plus a walking and biking weekend in Weardale, a Welsh working party and barbeque meet and, at the beginning of September, a hut meet at Coniston.

Meet write-ups include the latest Gritstone Trail episode and a walk from Edale, Duddon valley adventures and tales from Harpur Hill. Also, for those who have not seen this elsewhere, details of Severn Trent's worrying plans to expand the Derwent Reservoirs.

Also in here, memories of Mike Moore on page 16.

**Copy Deadline 20 August.**

## Meets List 2023 Michael Moss

Michael Moss: email: meetsec@oread.co.uk Tel xxxxxxxxxxxx

<b>July</b>	1/2nd or 8/9th	Peak climbing day meets	Peak district	Meet leader needed
	5th	Wednesday walk	Eastern river Dove	Rusty Clive Russell
	16th	Weekend walk	Upper Derwent	Nigel Briggs
	20th	Thursday short walk	Lea	Ruth Gordon
	25th to 27th	Tan Yr Wyddfa working party		Dave Snod Helliwell
	28/29th	Welsh hut meet Tan Yr Wyddfa		Dave Snod Helliwell
<b>Aug</b>	2nd	Wednesday walk	Millers Dale	Jan Wilson
	4th-5th	Weardale, walking and mountain biking		Pip Leach and Pete Masters
	12th/13th	Peak climbing day meets	Peak district	Ed Bloomfield
	17th	Thursday short walk	Darley Bridge	Ruth Gordon
	19th	Weekend walk		Louise Amandini
	26th-28th	BH		Meet leader needed
<b>Sept</b>	1st/2nd	Low House MAM hut, Coniston	Lakes	Charlie Taylor
	6th	Wednesday walk	Kinder	John Green
	9th/10th	Peak climbing day meets/BARMY comp?	Peak district	Meet leader needed
	16/17	Weekend walk		Richard Linney
	21st	Thursday short walk		Ruth Gordon
	23rd/24th	BARMY comp?	Peak district	
<b>Oct</b>	4th	Wednesday walk		Charlie Taylor
	6/7th	Fylde hut Little Langdale	Fylde MC hut swap	Dave Snod Helliwell
	11th	Winter wall Wednesdays		
	14th-22nd???	Mediterranean sport climbing	Sardinia, TBC	Meet leader needed
	19th	Thursday short walk		Ruth Gordon
	21st	Gritstone trail stage 6 - finale		Stuart Firth
	27/28	Curry meet, Tan yr Wyddfa	N Wales	Tony Howard
	30	Start Monday evening indoor meets	Climbing unit, Derby	
<b>Nov</b>	1st	Wednesday walk		Rusty - Clive Russell
	4th	Bonfire night	Heathy Lea, Chatsworth	
	8th	Winter wall Wednesdays		
	16th	Thursday short walk		Ruth Gordon
	18th	Annual dinneer		
	18/19	Joint FRCC/Oread MC Dry-tooling Meet	Rawhead Barn, Langdale	Neil McAllister & A N Oread
	18th	Weekend walk		John Gwyther
	19th	Post prandial walk		
<b>Dec</b>	6th	Wednesday walk		Charlie Taylor
	6th	Winter wall wednesdays		
	9th to 11th	Bull Stones		
	13th	Black rocks evening meet and pub social	Cromford	
	16/17	Dry tooling Masson Lees		
	16th	Weekend walk		Steve Booth
	21st	Thursday short walk		Ruth Gordon
	24-1 Jan	Christmas and New Year hut meet	Tan Yr Wyddfa	

## **Wednesday evening climbing venues.**

This year we will choose a venue in advance - it can still be changed if the weather is unsuitable but at least there will be a starting point for discussion.

- 5 July **Tissington Spires** then The Dog at Thorpe.
- 12 July **Harpur Hill** then the Church Inn, Chelmorton.
- 19 July **Earl Sterndale** then the Royal Oak, Sparklow.
- 26 July **Horseshoe** then the Derwentwater Arms, Calver.
- 2 August **High Tor** then the White Lion, Starkholmes.
- 9 August **Intake Quarry** then the Boat, Cromford.
- 16 August **Willersley** then the Boat, Cromford.
- 23 August **Masson Lees** then the Barley Mow, Bonsall.
- 30 August **Rainster/Harborough** then the Miners Arms, Brassington.

## **1-2 or 8-9 July Peak Climbing day meet**

Keep an eye on the Facebook page and io group for updates on this. Better still – decide where and when you would like to go and volunteer to lead this meet! Contact Michael Moss email: meetsec@oread.co.uk Tel xxxxxxxx

## **Wednesday 5 July Eastern Dove Walk Rusty Russell**

This walk will explore some of the ridge forming the Eastern side of the River Dove, and some of the little known side valleys of the main river, returning via Tissington, Parwich and the connecting paths. From Alsop Car Park we shall travel a little to the north before dropping down to the Dove via Iron Torrs. We then ascend Nabs Dale and travel the East Bank before turning East to return via Tissington, Parwich and Alsop. Meet Alsop Station Car Park (SK156548) 10.00am for 10.10 start. (Those wishing to avoid the extortionate Peak Park parking fees may travel with me by prior arrangement, first four applications accepted, up to three cars may be left at my house, I shall depart at 9.40 sharp.) Clive Russell email xxxxxxxxxxxxxx tel. xxxxxxxxxxxxxx

## **16 July Upper Derwent walk Nigel and Janet Briggs**

The July Weekend walk will be on Sunday 16<sup>th</sup> July. We will be visiting some of the Upper Derwent Hills. The plan is to meet at Fairholmes Car Park (SK 173 894) at 10.00 am. Initially we will head South East before heading North to Lost Lad. From here we follow the tops to Margery Hill. From here we drop down to join the River Derwent at Slippery Stones. On the way down we will be looking over towards the site of the Bullstones cabin. Hopefully someone will be able to point out the exact location, we

could not see any trace of it earlier this year! Slippery Stones is a well known Derbyshire 'dipping site', and being July it will be the ideal opportunity for a short swim, dip, or paddle. After drying off we walk alongside the reservoirs back to Fairholmes giving a walk of about 22 km. Please let us know if you will be joining us.

Nigel Briggs email - xxxxxxxxxxxxxx

Janet Briggs email -[xxxxxxxxxxxxxxxxxxxxx](mailto:xxxxxxxxxxxxxxxxxxxxx)

## **20 July Short Walk Lea Christine Paice**

The walk will start at 11.00 a.m. from outside the Jug and Glass, Main Road, Lea. DE4 5GJ. Roadside parking.

A short walk on the road will take us towards Sledgate Lane. We cross the 'Hollow Way' which is a bit a steep sided. Field footpaths take us to High Lane, the farm and popping out on Shuckstone Lane. A short walk on the road then footpaths eventually take us to Plaistow Green. Steadily upwards to the back of Crich quarry, skirting the quarry to reach Crich Stand. Skirting Crich we walk on another road stretch, Town End, Leashaw Road. On reaching Coddington we take the footpath to Wakebridge. From here it is a few fields to reach Long Lane. Aptly named, giving a steady walk back. However, we will pass Lea Gardens café which is open until 5.00pm (Cake!) and the pub is at the end. So, the end of the walk could be a good sit down, in good surroundings (possibly outside) if people wish. About six miles with gentle, very gentle inclines (Crich stand is on a hill!). Contact Christine Paice,[xxxxxxxxxxxxxxxxxxxxx](mailto:xxxxxxxxxxxxxxxxxxxxx)

## **25 – 29 July Tan yr Wyddfa Working Party and Weekend Meet Dave Helliwell**

Don't forget this will be the week to give the hut a bit of TLC, have some fun, do some climbing and then enjoy the weekend. All welcome for any part of the time you can spare. Although there is always plenty of cleaning, gardening and painting to be done, Pam Storer, Pam and Nodge Norris and friends have recently visited and very generously have done some of the annual jobs so there will definitely be some free time to climb, walk or just relax.

Dave "Snod" Helliwell email [xxxxxxxxxxxxxxxxxxxxx](mailto:xxxxxxxxxxxxxxxxxxxxx) tel. xxxxxxxxxx and leave a message, mobile xxxxxxxxxxxxxxxx



*Vintage working party featuring Geoff and Annemarie Hayes. Do you recognise anyone else?*

## **Wednesday 2 August Walk Millers Dale Jan Wilson**

We will meet at 10:00am for a 10:15 start in the car park at the Old Railway Station in Millers Dale (postcode SK17 8SN)(grid SK141733) just off the Monsal Trail. I believe there is a café so coffee might be available. Our route is long and narrow allowing lots of scope for shortening if you want to come and say hello or getting some good exercise if you are in the mood. We will walk in a northerly direction up Monks Dale, Peters Dale and Dams Dale, making our way up to Peak Forest where there is the possibility of a pub. Crossing the road we will head up Oxlow Rake before turning south and heading for Tideswell if the weather is good or straight back via the Pennine Bridle Way if we prefer. My aim is around 13 miles for the main walk with 6 and 10 ish mile options available. Hope to see you there.

Jan Wilson tel. xxxxxxxxxxxxxxxxx

## **4 - 5 August Weardale walking and mountain biking Pip Leach and Pete Masters**

For this meet, we will be using the campsite (or bunkhouse if you prefer) Haggs Bank, at Nentsbury, Alston CA9 3LH. Haggs Bank is actually in Cumbria but it is close to the border of Cumbria/Co Durham/Northumberland.

This area in the North Pennines, is an Area of Outstanding Natural Beauty, it has a wealth of geology and former leadmining, the C2C cycle way passes close by.



Prices at the campsite are currently £12 pppn camping, £20 for a campervan for one person or £25 for two people. Electricity is extra and would restrict where you park. Depending on weather, those with tents often head higher up the slopes, to avoid midges! A hotel, with a bar, is 3/4 mile away.

Peter is organising a walk for one of the days, about 10 miles, taking in lead-mining history, and a mountain bike ride for the other day, options of 20-30 miles and some steep gradients. Of course, please feel free to do your own thing.

If you are thinking of coming along, please let Peter or me know, then we can let the proprietor know how many of us to expect.

Pippa Leach email [xxxxxxxxxxxxxx](mailto:xxxxxxxxxxxxxx) tel. xxxxxxxxxxxxxxxxxxxx

Pete Masters email [xxxxxxxxxxxxxx](mailto:xxxxxxxxxxxxxx) tel. xxxxxxxxxxxxxxxxxxxx

## **12-13 August Peak Climbing Day meets Ed Bloomfield**

I'm hoping we can get out to some lesser travelled moorland grit such as Shining Clough on the Saturday. If weather permits.

Then for Sunday a bit more of a reasonable walk in somewhere nearer the hut - to be confirmed.

If there is not the conditions or the appetite for the above plan B will be to go to the Roaches and Hen Cloud.

I will send out an email nearer the time to confirm venues.

Ed Bloomfield: email [xxxxxxxxxxxxxx](mailto:xxxxxxxxxxxxxx) tel. xxxxxxxxxxxxxxxxxxxx

## **17 August short walk Darley Bridge Ruth Gordon**

We will meet for an 11.00 am start at the small car park/picnic site at Darley Bridge near the Square and Compass pub. SK270 624. There is a second car park belonging to the cricket ground very close by. We will meet in the one with the brown picnic site signpost.

This is a very flat walk for Derbyshire and suitable even for those who would just enjoy a couple of miles flat stroll along the river to Matlock to find a cafe or pub of your choice before catching a bus back!

The longer route ( under six miles) will take in Matlock, Oker, Snitterton and up Wensleydale to Wensley, Millclose mine , then via Turkey Dip Rocks to one of the now happily re-opened pubs at Darley Bridge – it would be rude not to!

Ruth Gordon email [xxxxxxxxxxxxxx](mailto:xxxxxxxxxxxxxx) tel. xxxxxxxxxxxxxxxxxxxx

## **19 August Earl Sterndale Walk Louise Amandini**

We will start at 10.15am from Earl Sterndale Church for approximately 10 miles around the Chrome Hill, High Wheeldon area. Bring a packed lunch.

Louise Amandini email: [xxxxxxxxxxxxxx](mailto:xxxxxxxxxxxxxx) tel. xxxxxxxxxxxxxxxxxxxx

## **1 - 3 September Low House Coniston Lake District Charlie Taylor**

We have the MAM Low House hut, located in the village of Coniston, booked for the weekend. The hut is located close to the fells of Dow Crag, Grey Friar, Wetherlam and the Old Man of Coniston with great walking and climbing in Great Langdale, just a few miles up the road. The Grizedale Forest offers plenty of easy walks and some of the best natural trails Mountain Biking routes the UK has to offer. Please book your place with Charlie Taylor: e-mail xxxxxxxxxxxxxxxxxxxx or call/text me on xxxxxxxxxxxx

## **Wednesday 6 September A Walk Over Kinder John Green**

I suggest starting at 10.00am from the car park at Barber Booth SK 1080 8472. There should be room for enough cars, but would think getting there earlier may be better as Saturdays can get busy. This is a classic walk over Kinder but keeping away from the main drag. We will walk up the road to Upper Booth then make our way into Crowden Clough. The ascent of this should be fun and a scramble can be done at the top, if you like, and weather conditions permit. From the top we use the compass to track over the main plateaux of Kinder and into the Kinder River basin which we follow to the Downfall (lunch?) From here around the edge to Cluther Rocks, then down to point 427m left around the ridge over Oaken Clough and pick up the Pennine Way back to the start. About 13k but some hard going.

John Green email [xxxxxxxxxxxxxxxx](mailto:xxxxxxxxxxxxxxxx) tel. xxxxxxxxxxxxxxxxxxxx

## **Next Winter's Evening Meets**

These take place on the first (except January) Tuesday of the month at The Royal Oak in Ockbrook.

03 October 2023: Paul Gardiner, OMC  
07 November: Cath Flitcroft (BMC)  
05 December: Jon Shields, paraclimber  
09 January 2024  
06 February  
05 March

Mike Parsons (ex Karrimor) has agreed to speak. He will choose a date shortly.

That leaves me with two slots. I would really like Oreads to step up and fill these. Do you have a tale to tell? Maybe you would prefer half an evening.

Do you know someone you could invite or someone you would like me to invite? Please be in touch.

Rob email: xxxxxxxxxxxxxxxxxxxx

## **News, Articles and Reports from Meets**

### **BMC Opposes proposals to extend Upper Derwent Reservoirs**



#### **In case you have not seen this elsewhere:**

The BMC strongly opposes proposals to extend the Ladybower network of reservoirs by flooding large areas of the Upper Derwent Valley.

In spring 2022, Severn Trent Water (STW) began consulting locally on their proposals to increase water storage in the Ladybower complex of reservoirs in the Upper Derwent Valley (UDV). These proposals are part of a national drive to find ways of meeting projected increases in demand for water over the next thirty years.

Any of the plans under consideration would represent a major development in the very heart of the Peak District and would result in the destruction of ancient woodland and other habitats; irreparable damage to the landscape; long term closure, destruction and rerouting of access ways; and set a terrible precedent for how our National Parks are managed for future generations.

Three main options are currently under consideration:

1. Raise the dam levels of one or more of the three existing reservoirs
2. Build new, higher dams in front of the existing reservoirs
3. Create a new fourth reservoir. The most likely site for this being upstream of Howden Reservoir.



The BMC are particularly concerned with the third proposal as this will be hugely detrimental to the landscape and areas such as Slippery Stones will completely disappear.

The BMC became alerted to the proposals late in 2022 and held a meeting with Severn Trent Water. The findings from this were raised at the BMC Peak Area meeting, and it was the view of the meeting that any new or expanded reservoir in the UDV was unacceptable.

We have subsequently submitted a formal response to STW communicating our general opposition to these major developments, stating:

‘As we find the efforts to increase efficiency of water use and reducing demand and leakages unambitious, we do not accept the need for more water resources being obtained from the Upper Derwent Catchment. We therefore object to the proposal for increasing water resources from the Upper Derwent Valley and the irreparable damage this would do to the national park.’

STW in partnership with Yorkshire Water are currently working on their preferred options for the 2nd (of five) stage proposals to be submitted to DEFRA in July this year. These will be subject to comment by stakeholders and local consultation prior to further decision making.

If and when regulatory approval is given, STW will then seek planning permission, almost certainly by a ‘development consent order’ application to the Secretary of State (SoS) citing the works as nationally significant infrastructure. This planning route would bypass local decision making, with the Planning Inspectorate instead making a recommendation to SoS. Assuming approval is granted it is projected that construction would commence around 2030.

Public awareness is currently low considering the scale of the impact locally and the wider implications for other National Parks. This is in part due to a lack of any real detail so far provided by STW. The lack of key information is such that the Peak Park Authority has been prompted to issue a holding statement of opposition to the proposals.

Despite the vagueness of STW’s plans key organisations are starting to come out in opposition to the proposals. These voices will only grow louder as the true extent of what is being planned becomes apparent. It’s clear that the BMC will not stand alone in our opposition – more information and how BMC members can object to these proposals will be forthcoming.

**Meanwhile Mike Wren has identified a very informative website which has a link to the petition to sign:**

<https://www.derwentandhopewoodlands-pc.org.uk/udvre-save-the-upper-derwent-valley/>

## Gritstone Trail 5 - Saturday 20 May Stuart Firth



Three members, one guest and a dog showed up for Stage 5 of the Gritstone odyssey on what seemed like the first real summery day of the year. Most regulars were away on holiday having fun elsewhere.

The walk itself went through some little-walked country with delightful views and if anyone is interested I can provide an OS GPX file. Highly recommended.

There remains some unfinished business in that we failed to find the advertised memorial stone to the “dead man in the snow with a woman’s single shoe print nearby”. Apparently the stone has been replaced and is in a slightly different location. An objective for another day...

Stage 6 of the Trail will be on Saturday 21 October 23.  
Many thanks to Sue Todd, Angela Milne, Chris Mather and Woodie for their company.





## Wednesday Walk Edale 7 June John Gwyther



As walk leader, I should have been there first. I was the last...Despite being a small car park and another large group meeting there at the same time, everyone found a space. Rachel even came with her fully loaded rucksack for the Tour de Mont Blanc.

So off the eleven set, down the Pennine Way, up Jacob's Ladder (impressive how we seemed to overtake many people perhaps a third our age!) and on to the Swine's back.



There we did a sharp left and descended to hide behind a stone wall (out of the evil NE wind), have our coffee break, arouse the curiosity of a neighbouring field of Aberdeen Angus and give a lone lady walker a nasty shock.

Next we descended along Oaken Clough and made a sharp left turn towards South Head. Lunch was consumed

near South Head Farm (from which we spied about three dozen people on South Head -DoE?). When it was our turn, only seven of us could be bothered, the others preferring to bask in the sun. A long slog up to the Sheffield Road and back along Chapel Gate, where the monolithic, castellated tunnel air vent was admired. Tea was taken in the old railway station tearooms at Edale (highly recommended) but we had managed to lose Nick and Steve (I thought four quid for a 30 minute stay in the station car park a bit steep, so we parked in the council one). A lovely day. Thanks to Chris P, Jan, Rachel, Pip, Mike R, Mike H, Nick, Steve, Chris M and Frédérique for the excellent company.



## **High Moss Meet 10-11 June Chris Radcliffe**

Good fortune ensured that hot dry and sunny weather coincided with the meet at High Moss - the excellent Rucksack Club hut near Seathwaite in the Duddon Valley.

Although outnumbered by the senior members it was good to have a trio of younger members on the meet and together with Rucksack Club members also staying at the hut it was a convivial meet enjoyed in immaculate weather conditions.

Saturday saw the whole of the team (apart from the meet leader) heading along the Walna Scar track to Dow Crag summit and then descending



South Rake to the foot of the crag.

Snod and Roger climbed Arête, Slab and Crack which became a bit of a mystery tour as old fashioned route descriptions could be made to fit every feature on the crag. The ascent included an altercation with a party abseiling down the crag dislodging rocks in the process. Simon and Wim climbed Murray's Route and both parties descended again to climb out via



Giant's Crawl.

Meanwhile Tom, Ed and Rob climbed C Ordinary Route and then Hopkinsons Crack. With a long approach it was a big day out, but hugely enjoyed by all.

*Ed and Rob on Hopkinsons Crack. Photo Tom Larkam.*

From the summit of Dow Richard dropped back to Walna Scar and continued his walk over White Peak and Caw Moss then descending to Seathwaite on the line of the Duddon Valley Fell Race, one of his favourites.

Sunday saw all the climbers head to the readily accessible Wallowbarrow Crag where numerous starred routes were climbed.

The Meet Leader was preserving his knees and did two good rounds on his ebike: a loop over Wrynose from Cockley Beck and around the quiet side of Coniston on Saturday. Then on Sunday it was a loop over Birker Fell to Wasdale and Gosforth.

It was a brilliant weekend. Thanks to Roger, Tom, Snod, Wim, Richard, Rob, Ed and Amber for supporting the meet and making it a success.



*Fabulous Lake District weather! Photo Ed. Bloomfield.*

## **Heathy Lea followed by Harpur Hill – Wednesday 14 June Chris Wilson**

We had a little working party at Heathy Lea on the Wednesday scheduled for Harpur Hill in the evening. It turned out to be a glorious day – the sun shone and we all had a great deal of fun (?).

Vegetation was cut back, the “lawn” mowed, windows cleaned inside, and outside as well (thank you Paul G!). The cottage was cleaned from top to bottom, as was the outside toilet. Tea was drunk (although complaints were raised that not enough time was allocated to this) and a good natter was held. Thanks so much to the small band of helpers (you know who you are) who turned up and keep the Heathy Lea going.

A quick wash and it was off to enjoy the evening sunshine at Harpur Hill. Arriving a little late we found a sizeable number of young and older Oreads shivering in the shade on Long Wall. It was either the promise of sunshine or the sight of my attempt at climbing that quickly drove everyone upstairs to the Upper Tier. Lots of routes were climbed until the setting sun and the cooling breeze suggested that a visit to the Church View in Chelmorton would be a good idea. There we were joined by more Oreads, these sporting



the evidence of their evening battle with nature in Deep Dale. It was lovely to have such a good number and wide range of Oreads out on an evening.



*Left: Some of the team at Harpur Hill. Right: Congratulations to Chris Wilson - back in action with two new knees! Photo Martin Lancaster.*

*Spooky goings on as the sun went down over Harpur Hill!*

*This photo, (taken on a different phone from the cover photo), shows even more clearly the bright blue dot surrounded by a ghostly form apparently making its way towards an abandoned pair of boots.*

*Time for all wise Oreads to head for the pub!*





## Hut Bookings.

Both our Welsh and Derbyshire hut bookings have now moved online at the Oread website [www.oread.co.uk](http://www.oread.co.uk).

The new system allows you to see up to date bed availability details and make your own bookings.

**Please remember to sign in as members first before making your bookings as you get access to the Oread beds and rates and you don't have to enter lots of details required for external bookings.**

All queries and outstanding payments should be addressed to Michael Hayes, the Hut Bookings Secretary: 179 Starkholmes Rd. Starkholmes, Matlock DE4 5JA Mobile 07771 700913. Email:

[michaelhayes6688@gmail.com](mailto:michaelhayes6688@gmail.com)

Our preferred method of payment is via bank transfer to our Lloyds account – Sort Code 30-98-97 Account number 62584068. Please use the 'Reference' box to say what the payment is for. **In particular please say which hut, ie Hut fees HL, or Hut fees TyW.** Your name is not necessary in the reference, unless it is different from the bank account name. Alternatively you can post a cheque, payable to Oread M.C. to the above address.

## Some memories of Mike Moore



*Mike is shown here (centre) at Rowsley at the end of the 1953 Marsden Rowsley walk with Geoff Gibson to his left and Roger Turner and Clive Webb to his right. (Photo from the 50<sup>th</sup> Anniversary Journal).*

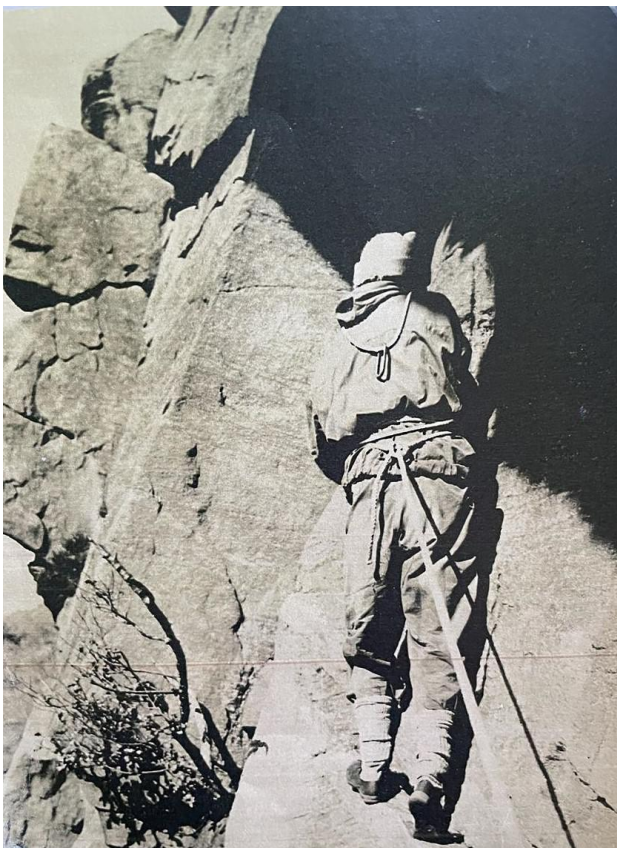
### John Fisher writes:

While I have written in our Newsletter, on at least two occasions about Mike Moore, our 100-year-old member, this is the last as he died on 13<sup>th</sup> May this year. Not a founder member but near it, he was one of those with broad interests in climbing and mountaineering who were very active in the forties and fifties when the club membership was very small and close-knit.

A Committee member, with Dave Penlington, he organised the tenancy of our first hut, Bryn-y-Wern in the Pennant Valley. A keen and competent photographer in the days when the black and white print was popular, the visual memories of our old active days hold much to the generosity of Mike. In later years his artistic inclinations led him to become a painter of some ability.

As to personal history just post war he lived in Burton-on-Trent working as a purchasing officer for G.K.N. in Birmingham. It was when studying at B.o.T. Technical College that he met the earliest O.M.C. members, the names Penlington, Axon and Sutton coming to mind, and so the relationship developed.

At a personal level, Mike was kind enough to take me under his wing on the club's 1950 Christmas trip to Tyn-y-Shanty (Ogwen Valley, N. Wales). When in most respects I was as blind as a young bat on such occasions. As previously recorded, in the hot summer of 1953 we holidayed in Cwm Cowarch, then little visited, followed by an energetic week in Ogwen when we did the 14 peaks and some decent rock climbs.



Later Mike married Meg who had climbing connections in Birmingham, moved to Leominster and elsewhere, had children, and so moved out of sight of the Oread. Eventually they returned to Uttoxeter. Then, getting on in years, his Oread contact was limited to dinners and the Newsletters, the usual fate of us all. Even later, with Mike in his nineties and myself eighties, we had a yearly trip of reminiscence to T-y-W which we naturally much enjoyed. He was pleased to be elected as an Honorary Member of the Club.

Before it is forgotten I should re-record that he was awarded the Legion d'Honneur for his W.W.2 military services on the Omaha beaches on Day 1 of the Normandy landings. This last would seem an interesting and complimentary memory to end on.

*One of Mike's prints of about 1951 showing an O.M.C. member in the primitive gear of the time halfway up Pulpit/Technical Slab on the Roaches. Note the single sling and hemp rope tied with an elegant simple bowline.*



## Information on Member Activities

Welcome to new Full Member, Marie Cowie. We hope you will enjoy many happy days with the Oread.

### Martin Musson



Many long term members will remember Martin and Ingrid Musson who brought so much fun and enthusiasm to club meets in the 1970s and early 80s before they left for a new life in the USA.

As some of you will know, their full-on life of sailing, canoeing, snowboarding, mountaineering and hiking and every kind of outdoor activity has been sadly curtailed over recent months due to Martin's becoming ill with Acute Myeloid Leukemia last August. He's still fighting on and getting out to enjoy the outdoors in spite of chemo therapy and other debilitating treatment. Here they are, messing about with boats together. When he's not been fit to do much jogging or hiking he has been designing,



building and sailing remote controlled model yachts of which he now has five!

We wish him well in his fight with this horrible illness.

## **Rusty's Puzzle Corner**

### **This month's puzzle:**

This month's puzzle is again in two unrelated parts.

**Part 1** where was the photograph below taken?



**Part 2** this refers to the sleeping quarters that were pressed into use when the original Bullstones Cabin first became unfit for habitation (the meet has retained the traditional name of “Bullstones” over the years even though many other overnight venues have later been used.)

The question is “from what material was the roof constructed and why should this be remembered?”

### **Last month's puzzle solution:**

The question concerned a rock climbing pioneer, exploring a potential new ascent, who suffered a fall but escaped serious damage by landing on a sloping ledge.

**The answer:** The pioneering climber referred to was Colin Kirkus and the frightening incident took place during his reconnoitre prior to his ascent of Pinnacle Wall on Craig Yr Ysfa.

*Editor: Ruth Gordon, 4, The Terrace, Upper Lumsdale, Matlock, Derbys. DE4  
5LB  
Tel. 01629 56636 07999 857 922. Email [alistair.ruth@btinternet.com](mailto:alistair.ruth@btinternet.com)*